

PLUMUX STUDIO

Go Live Without Limits...

Welcome to Plumux Studio!

Thank you for choosing Plumux Studio – a modern, intuitive live streaming and media presentation tool designed to make broadcasting easier for anyone, anywhere.

Table Of Contents

1. Introduction
2. Installation Guide
3. Getting Started
4. Core Features
5. Keyboard Shortcuts
6. Troubleshooting & FAQs
7. Contact & Support

1. Introduction

Plumux Studio is built for simplicity and power. Whether you're presenting lyrics, videos, or live screen content, this software allows you to do it with ease. Designed for churches, event hosts, educators, and online content creators.

2. Installation Guide

For windows:

1. Download the .zip file from the official site:
plumuxstudio.vercel.app.
2. Extract the contents using WinRAR or any archive extractor software. (You can do so by right clicking on the .zip file and clicking on **Extract**).
3. Open the .exe file in the extracted folder to launch the app.
4. If prompted by Windows Defender, click **More Info > Run Anyway**

The installation will begin and once installed, the app will automatically start and a shortcut will be placed on your desktop.

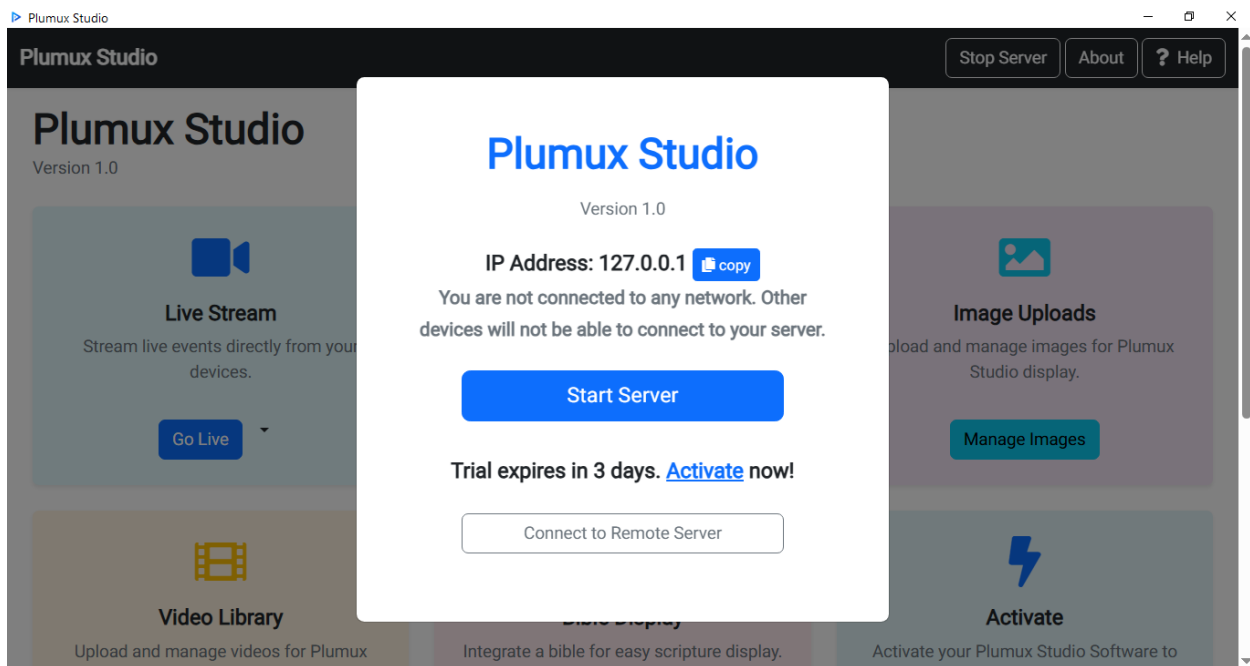
3. Getting Started

- On first launch, you get a **3-day free access** to explore the full features.
- After trial, activate using the activation code sent after payment.

4. Core Features:

a. Launcher:

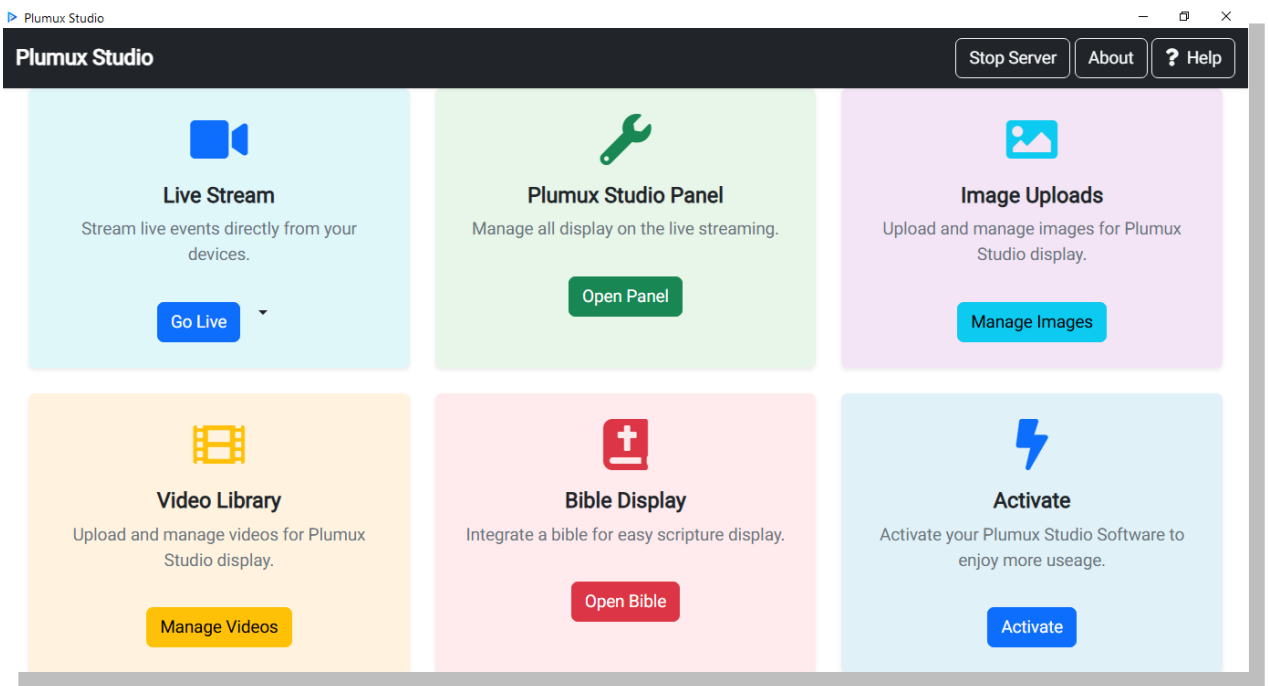
This is the first page you see when starting the Plumux Studio Software. A modal displays your IP Address and your server status. You must connect to a WiFi in order to connect with other devices but for testing purposes, you can use your local IP which is **127.0.0.1**.



Then you click the **Start Server** button, please wait patiently for the server to start, this usually take some seconds. After the server has started, you will see a page with different options to choose from which includes:

- Live Stream
- Plumux Studio Panel
- Image Uploads

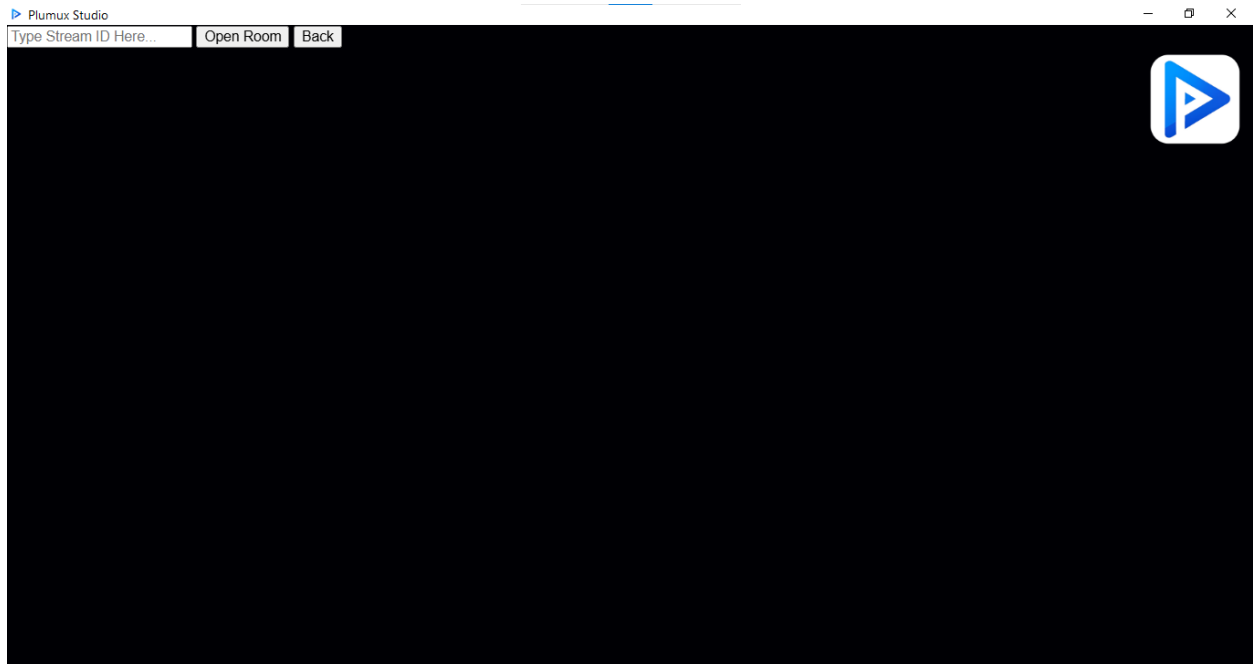
- Video Library
- Bible Display
- Activate
- Brand Image (**Requires Activation**)
- Static Image



Note: You might be prompted by Windows Firewall, please allow the software use your networks for the transmission.

Live Stream

By clicking the **Go Live** button, you will be redirected to the live streaming page which comprises of the a text input, two buttons **Open Room & Back**, and the brand image.



To start streaming, insert your preferred custom stream ID in the text input provided, this will be used by other mobile devices to connect. Then click on the **Open Room** button, this will open a room for the connection. Please wait until when you see the **live** signal to show that the room is opened.



To exit the page, simply move your mouse cursor to the live text signal at the top right and on hover, you will see a button to exit.

Switching Cameras

To switch cameras, you can simply click on **1-5** on your keyboard, it respectively shows the stream of cameras connected. To view your own camera stream, click on the **0** button and your camera stream will be displayed. To clear all streams, click on the **C** button on your keyboard.

Static Image

The static image is a fallback image used to cover the screen in case of errors or similar, it can be activated by clicking the **S** button on your keyboard and it can be removed by clicking the **Z** button.

Note: The static image will be automatically shown if the currently viewing camera disconnects.

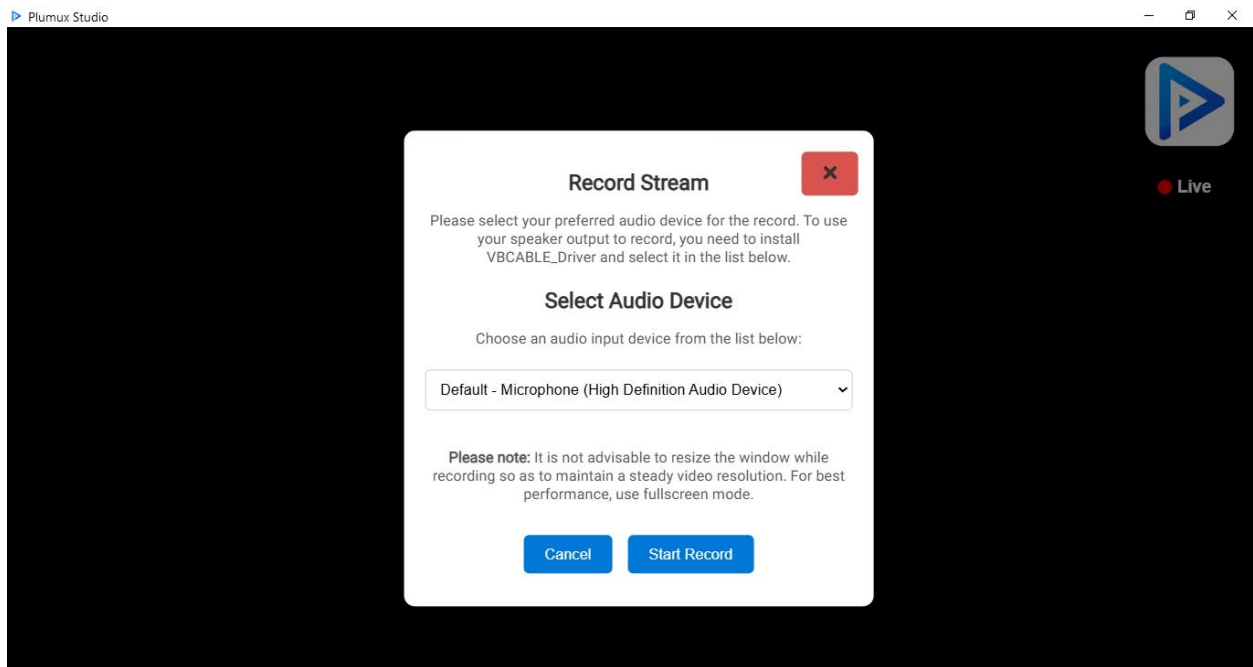


Recording A Live Display

To record a live display, you can simply click on the **R** key on your keyboard, you will be prompted to choose your preferred audio device for audio input in the video record. You might want to use an external audio device, your microphone or your speaker output.

Note: To use your speaker's output as an input in the record, you must install VB Cable Driver in your PC and set as default device. Then select it here. Then start record.

To stop recording, you can simply click on the **R** key again. If you are on the free trial, your recorded video will be saved as a WEBM file and with a watermark on the video, while if you are using an activated version, your video will be saved as MP4 and no watermark. You will be prompted to select your preferred file name and destination of the file.

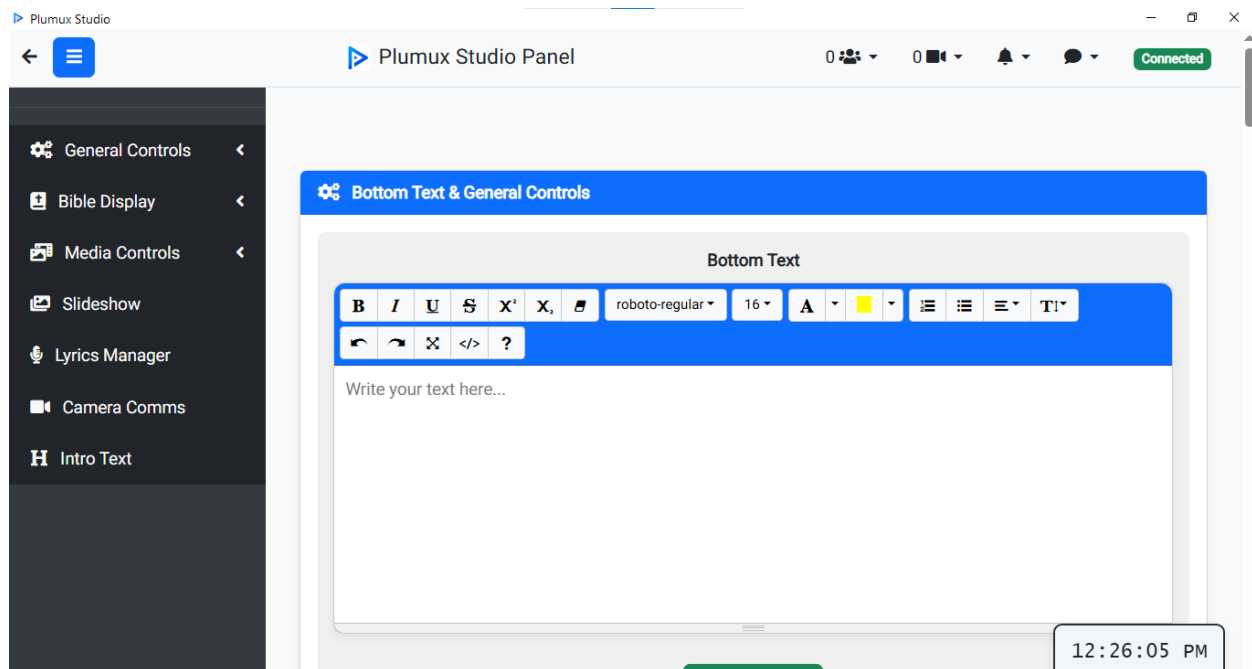


Keyboard Shortcuts

- **X** : To remove a Joint Text, Marquee Text, Text Preload.
- **L**: To remove a lyric text.
- **T**: To remove a bottom text.
- **C**: To clear stream screen.
- **1 – 5** : To select a camera stream.
- **0**: To show your local camera.
- **S**: Show static image.
- **Z**: Remove static image.

PLUMUX STUDIO PANEL:

The Panel is the page used by the user to display information remotely on your live page. This is used by another PC.



This is equipped with text presets that can be edited by the user. It also provides means to communicate with your mobile camera, and server. This is the heart of your streaming.

Features:

1. The Upper Section:

This consists of the:

- Back Arrow Key: To go back to the launcher.
- The Sidebar Display Toggle: To show/hide the sidebar.
- The Plumux Studio Text
- Rooms Panel: To see all open rooms.
- Camera Panel: To see all mobile cameras connected.
- Notification Panel: To see/get notifications.
- Message Panel: To read messages from mobile camera.
- The Connection Status: To check connection status with the server. This triggers the modal to check live latency rate.

2. The Sidebar:

This consists of different menus to create a display.

- General Controls: Bottom Text, Marquee Text, Joint Text, Text Scroll, Content Margins, Screen Sizes, Clock.
- Bible Display: Opacity, Preload Text.
- Media Controls: Images & Videos
- Slideshow
- Lyrics Manager
- Camera Comms
- Intro Text

3. The Main Page:

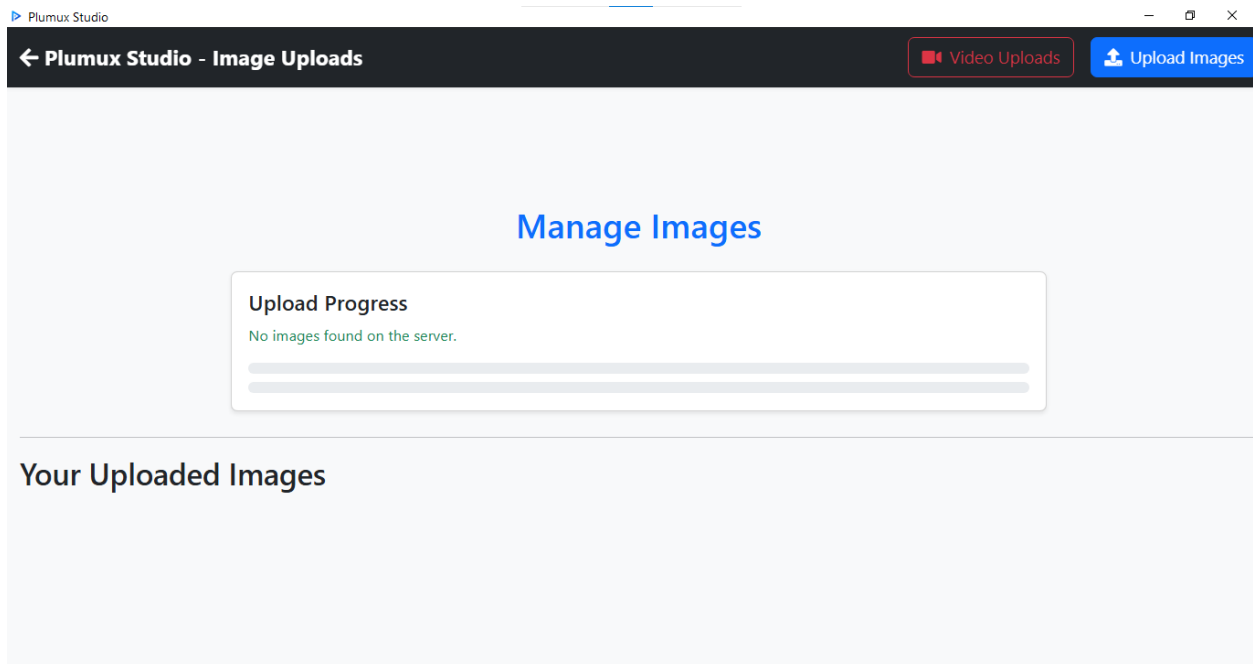
This is the main page.

- Bottom Text: This triggers your inputted text to appear at the bottom of your live stream.
- Marquee Text: This displays a moving text on your live stream.
- Joint Text: This displays text in the center of the live stream.
- Enable/Disable Joint Scroll: This is used when there is an overflow in the joint text.
- Content Margins: This allows you set a margin for the joint text and image/video display.
- Screen Size Controls: This changes the size of the joint text, image/video display.
- Clock: This is an additional feature to display a clock at the bottom right.
- Joint Text Opacity: This changes the joint text opacity to transparent or opaque.
- Bible Opacity: The same applies for this.
- Preloaded Text: This feature applies if the joint text cant be used in real time, the text are preloaded beforehand and are chosen by number.
- Uploaded Media (Images): Here you can upload your images.
- Uploaded Media (videos): Here you can upload your videos.
- Prefetch Media: This is used to preload all media for easy and fast loading.

- Slideshow: This is used to automatically display images as a slide with an interval of 4 seconds.
- Lyrics Manager: This is used to display a text at the bottom center of the screen with a black transparent background. You can display them by clicking them.
- Server to Camera Command: This allows text chat between mobile camera and the panel.
- Intro Text: This displays a text with a grow and shrink animation at the center of the screen.
- Bottom Text Intro: This is used to display a bottom text at the bottom left.

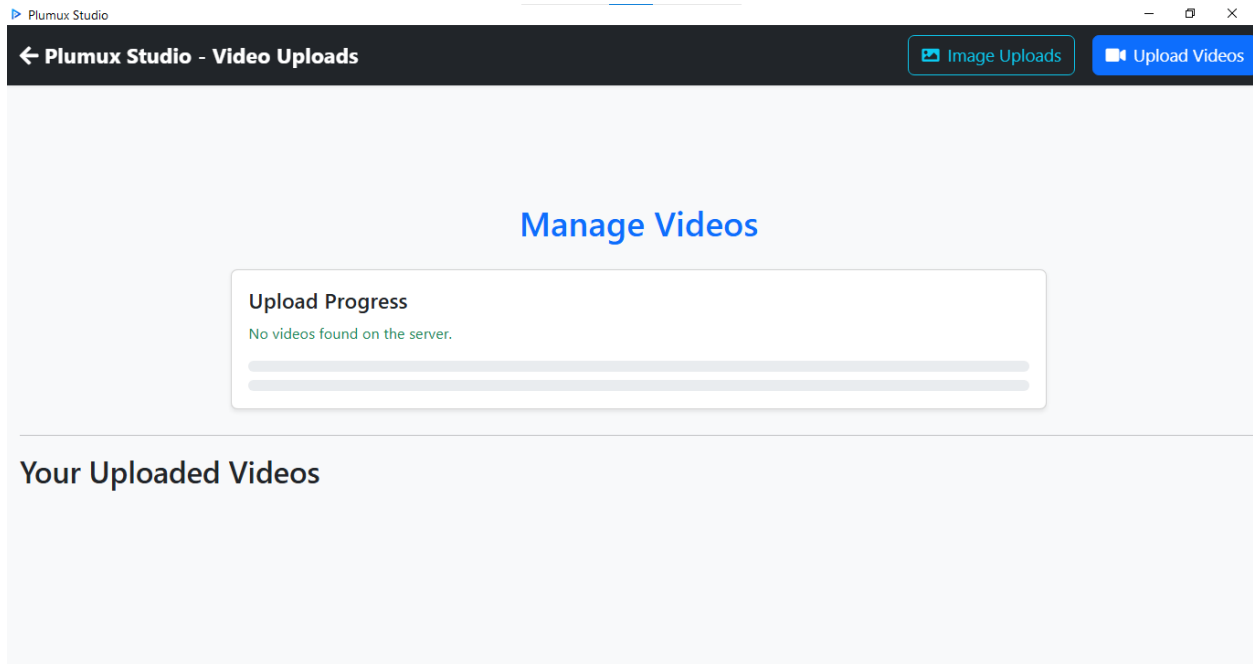
IMAGE UPLOADS

Here you can upload images to the server and also delete them.



VIDEO UPLOADS

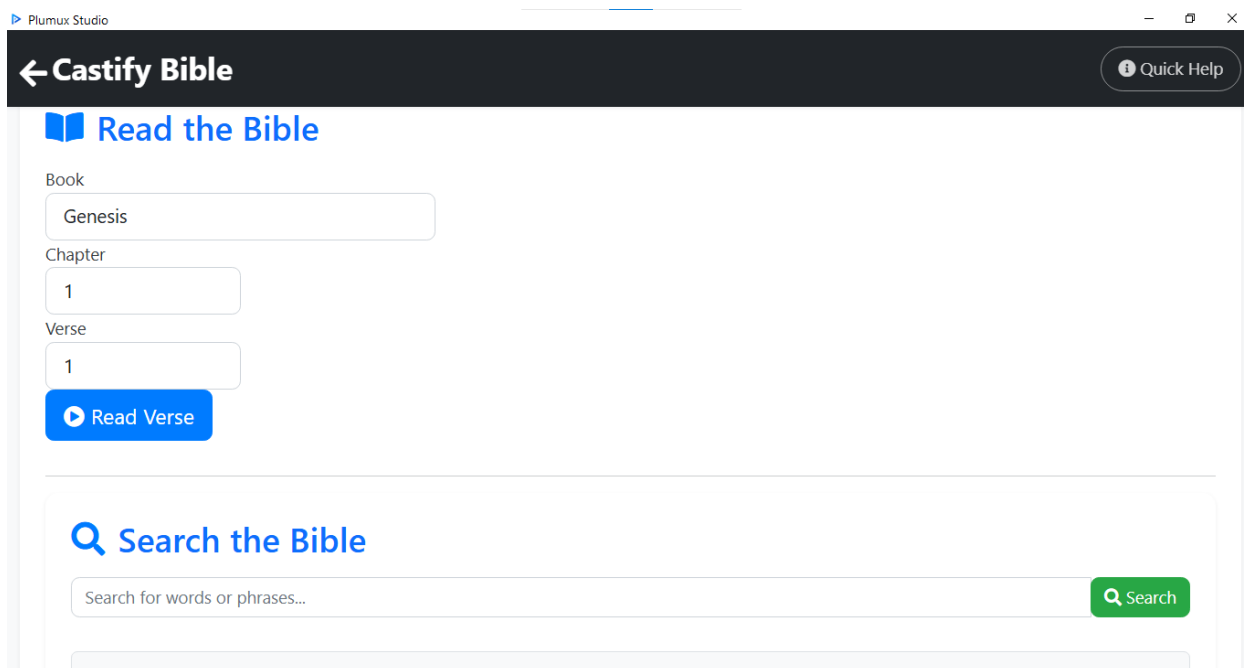
Here you can upload videos to the server and also delete them.



BIBLE DISPLAY

Here you can display the bible scriptures.

Note: Only KJV versions are provided, more are coming in the next versions.



Reading Verses

- Use the **Book**, **Chapter**, and **Verse** dropdowns/inputs to select specific scriptures.
- Click the **"Read Verse"** button to display the chosen verse in a pop-up window.

Navigation Pad (Control Pad)

- Click **"Toggle Navigation Pad"** to show/hide the directional controls:
 - **Up:** Go to the **Previous Chapter**.
 - **Down:** Go to the **Next Chapter**.
 - **Left:** Go to the **Previous Verse**.
 - **Right:** Go to the **Next Verse**.
 - **P key:** Go to the **Previous Verse from History**.
 - **N key:** Go to the **Next Verse from History**.

Streaming & Sharing

- When a verse is displayed in the ****Verse Modal****, press the ****"S" key**** on your keyboard (or click the "Send to Stream" button) to send the current verse content to your connected display/stream.

Search

- Type keywords or phrases into the ****search bar**** and click ****"Search"**** to find relevant verses in the Bible.

Preloaded Verses

- Add your favorite verses or custom text using the input box and ****"Add Verse"**** button.
- Click on any displayed verse card to quickly load and send it to the stream.

TROUBLESHOOTING & FAQs

- **Window blocks the app, what should I do?**
Click **More Info > Run Anyway** during installation.
- **App won't open after activation.**
Ensure you enter the correct activation code sent via Whatsapp.

HOW TO'S SECTION

HOW TO USE OBS STUDIO TO STREAM YOUR SCREEN TO YOUTUBE OR FACEBOOK

If you want to *live stream your Plumux Studio output* to platforms like *YouTube* or *Facebook*, you can use a free tool called *OBS Studio (Open Broadcaster Software)*.

Step 1: Download and Install OBS Studio

1. Go to [<https://obsproject.com>](https://obsproject.com)
2. Click *Download OBS Studio* (choose *Windows*, *Mac*, or *Linux*).
3. Install it like a normal application.

Step 2: Open OBS and Set Up a Scene

1. Launch OBS Studio.
2. At the bottom-left, click the *+* under *Scenes*. Name it anything you want (e.g., "Plumux Stream").
3. Now go to *Sources* (right beside Scenes), click the *+*, and choose *Window Capture*.

Step 3: Capture the Plumux Output Window

1. When prompted, name the source (e.g., "Plumux Output").
2. A settings window will appear — under *Window*, select the window where your Plumux Studio live output appears.
3. Click *OK*. You'll now see a preview of your Plumux window in OBS.
4. Resize it if needed to fit the canvas.

Step 4: Connect to YouTube or Facebook Live

1. Go to *File > Settings > Stream*.
2. Under *Service*, choose *YouTube* or *Facebook Live*.
3. You'll be asked to enter your *Stream Key*.

How to get your Stream Key:

- *YouTube:* Go to [YouTube Live

Dashboard](https://www.youtube.com/live_dashboard), click *Create Stream*, and copy the *Stream Key*.

- *Facebook:* Go to [Facebook Live Producer](<https://www.facebook.com/live/producer>), create a live stream and copy your *Stream Key*.

4. Paste the stream key into OBS and click *Apply > OK*.

Step 5: Start Streaming

1. Click *Start Streaming* in OBS (bottom-right corner).

2. Go back to YouTube or Facebook — you should now see your Plumux live output!

Notes:

- Make sure your internet connection is stable.

- If your Plumux window doesn't appear, ensure it's open and not minimized.

- OBS might ask for permissions on your first run — grant them for proper screen access.

HOW TO INSTALL VB-CABLE TO CAPTURE SPEAKER AUDIO FOR SCREEN RECORDING

If you want to record your screen along with internal (speaker) audio using Plumux Studio, you'll need to install a virtual audio driver called VB-Cable. It routes your PC's audio output into a virtual input device so your recording can capture sound.

Step 1: Download VB-Cable

1. Visit the official website: *<https://vb-audio.com/Cable/>*

2. Scroll down and click *Download* under the “VB-CABLE Driver” section.

3. After downloading, extract the ZIP file.

🔗 Step 2: Install VB-Cable

1. Open the extracted folder.

2. Right-click on *VBCABLE_Setup.exe* (or *VBCABLE_Setup_x64.exe* if you’re on 64-bit Windows).

3. Select *Run as administrator*.

4. Click *Install Driver*.

5. Restart your computer after installation.

🔗 Step 3: Set VB-Cable as Default Playback Device (Optional for Recording All Sounds)

1. Right-click the speaker icon in the taskbar.

2. Click *Sound Settings > More sound settings*.

3. In the *Playback* tab, right-click *VB-Audio Cable* and choose *Set as Default Device*.

4. Now, all sounds from your PC (YouTube, music, system sounds) will be routed through VB-Cable.

🔗 Step 4: Use VB-Cable in Plumux Studio

1. In *Plumux Studio*, when starting screen recording via the software (by clicking on R in the streaming page), select the *audio input device* as *VB-Cable Input*.

2. Start screen recording — both **screen** and **speaker audio** will be captured.

Important Notes

- To hear your sound while recording, you can **monitor** VB-Cable:
 - In **Sound Settings > Recording**, double-click **VB-Cable Output**.
 - Go to the **Listen** tab.
 - Check **“Listen to this device”** and select your **headphones or speakers** as the playback device.
- If you forget to switch back from VB-Cable to your normal audio output, you won't hear any sound — simply set your **speakers/headphones back as default** after recording.

HOW TO CHECK FOR UPDATES*

To keep Plumux Studio running smoothly with the latest features, it's important to stay updated. The app comes with a built-in update check system, so you don't have to worry about manually searching for new versions.

Automatic Update Check (Recommended)

Plumux Studio automatically checks for new updates every **5 minutes** while the app is running.

- If a new version is available, you'll get a **notification** inside the app.
- The notification will include details like **version number**, **release date**, and **what's new**.

- Clicking the update link will take you directly to the official ***Plumux Studio website*** where you can download the latest version.

🔗 ***Manual Update Check***

If you want to check manually:

1. Go to the ***Update*** section.
2. Click on ***“Continue”***.
3. The app opens a URL using your default browser.

🔗 ***Where Updates Are Hosted***

Updates are always hosted on:

`https://plumuxstudio.vercel.app/download`

Bookmark this link to always get the official and secure versions.

🔗 ***Why Stay Updated?***

- Get ***new features*** and improvements.
- Fix any known ***bugs or crashes***.
- Maintain ***security*** and compatibility with newer devices or systems.

> Note: You'll need an internet connection to check and download updates.

HOW TO USE AN EXTERNAL MICROPHONE OR AUDIO SOURCE*

Plumux Studio allows you to record or stream using high-quality external audio input devices, such as USB microphones, lapel mics, or audio mixers. Here's how to set it up:

📖 *Step-by-Step:*

1. *Plug in your external microphone* before launching Plumux Studio.
2. Launch the app.
3. Go to the *Live Streaming Page* section (you can find it in the main launcher).
4. Click on the key **R** on your keyboard and from the *Microphone / Audio Input* dropdown, select your external mic.
5. Test your audio to confirm it's working.

📖 Tips:

- Use *USB microphones* for clearer and more professional audio.
- For mixers, make sure drivers are installed.
- Always test before live sessions or screen recording.

📖 Why Use External Audio?

- Built-in microphones often pick up background noise.
- External mics provide better voice clarity, depth, and focus.

HOW TO TRIM OR CUT RECORDED VIDEOS FROM PLUMUX STUDIO*

Plumux Studio currently focuses on live production and screen recording. If you need to trim or cut sections of your recorded videos, here's how to do it easily using free tools.

✂️ *Option 1: Using the Windows Photos App (Built-in)*

1. *Open your recorded video* with the default *Photos* app.
2. Click the *Edit & Create* dropdown at the top.
3. Select *Trim*.
4. Drag the sliders to select the start and end points.
5. Click *Save As* to export the trimmed version.

Option 2: Use a Free Editor like Clipchamp or Shotcut

- *Clipchamp (Online by Microsoft)*

1. Visit clipchamp.com and sign in.
2. Upload your video.
3. Drag it to the timeline and trim or split as needed.
4. Export the video in your desired resolution.

- *Shotcut (Offline)*

1. Download and install Shotcut (free).
2. Open your video and use the timeline to trim.

3. Export the final cut.

📌 Tips:

- Always save trimmed clips separately to avoid losing original files.
- Use 720p or 1080p exports for a balance of quality and size.

CONTACT & SUPPORT

For any questions or suggestions for the Plumux Studio Software, please contact us.

Website: plumuxstudio.vercel.app

Whatsapp: +234 903 412 5827

E-mail: prospersamueledoki1@gmail.com
splendidedgetechnologies@gmail.com

Socials:

Facebook: Splendid Edge Technologies

Youtube: Splendid Edge Technologies

Thank you for Choosing Plumux Studio!

Connect. Create. Captivate.